



PONT INTERNATIONAL  
**GORDIE**  
**HOWE**  
INTERNATIONAL BRIDGE

## **Gordie Howe International Bridge Project Procurement Overview**

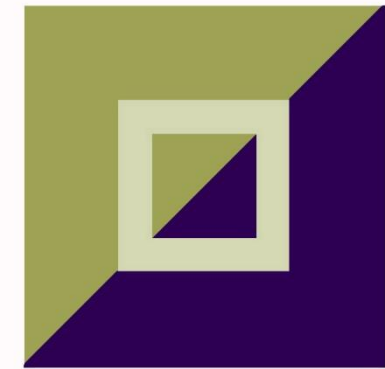
Detroit Vendor Summit  
November 20, 2019



# AGENDA

1. Welcome
2. Safety Moment
3. Project Overview
4. Construction Schedule & Workforce
5. BNA Procurement Process
6. Project Goal Requirements
7. Breakout Session

# US DELIVERY PARTNERS



**SOUTHWEST  
DETROIT**  
BUSINESS  
ASSOCIATION

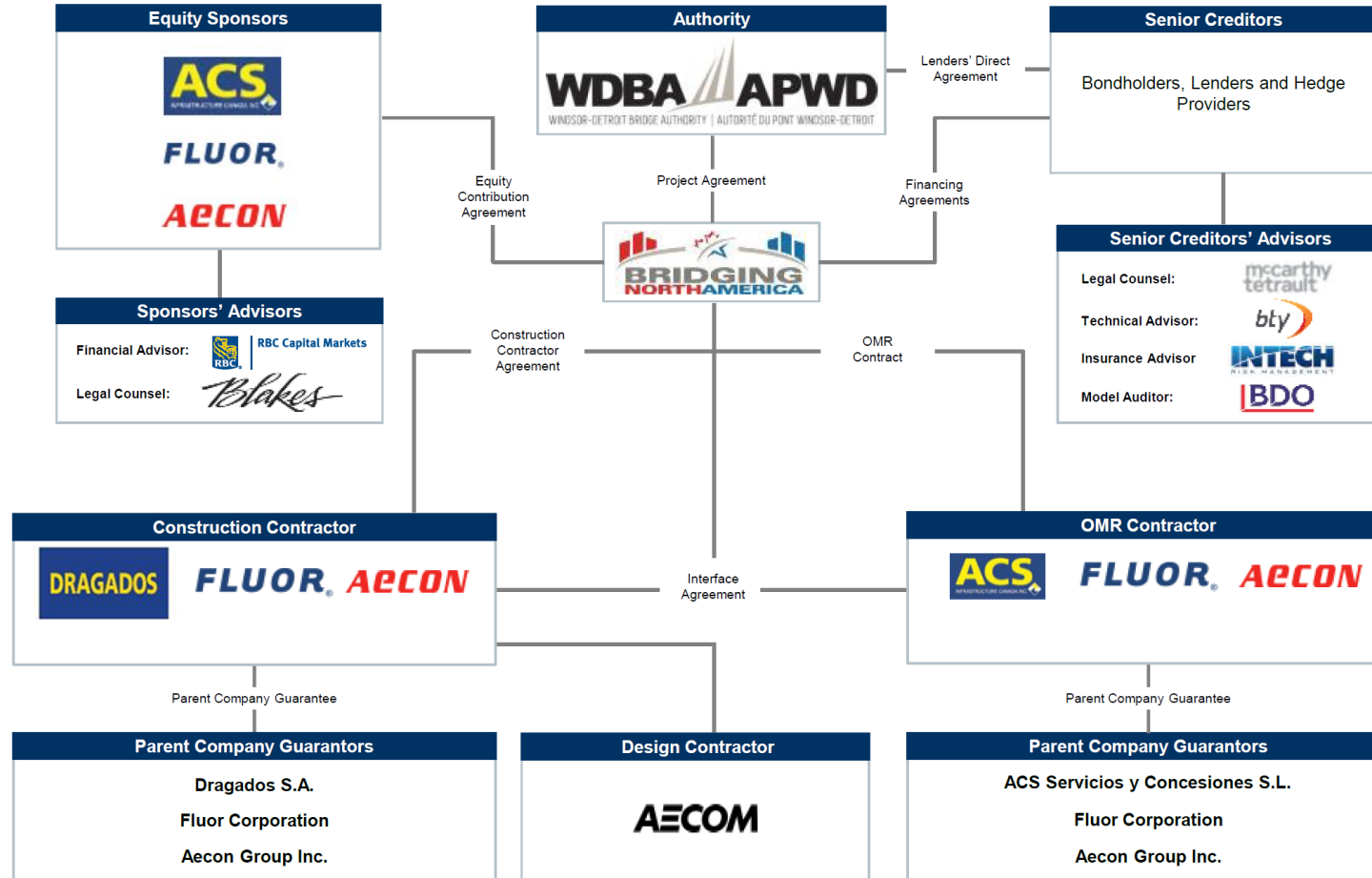
# **SAFETY MOMENT**

Bob Gallant, Health & Safety  
Manager, BNA

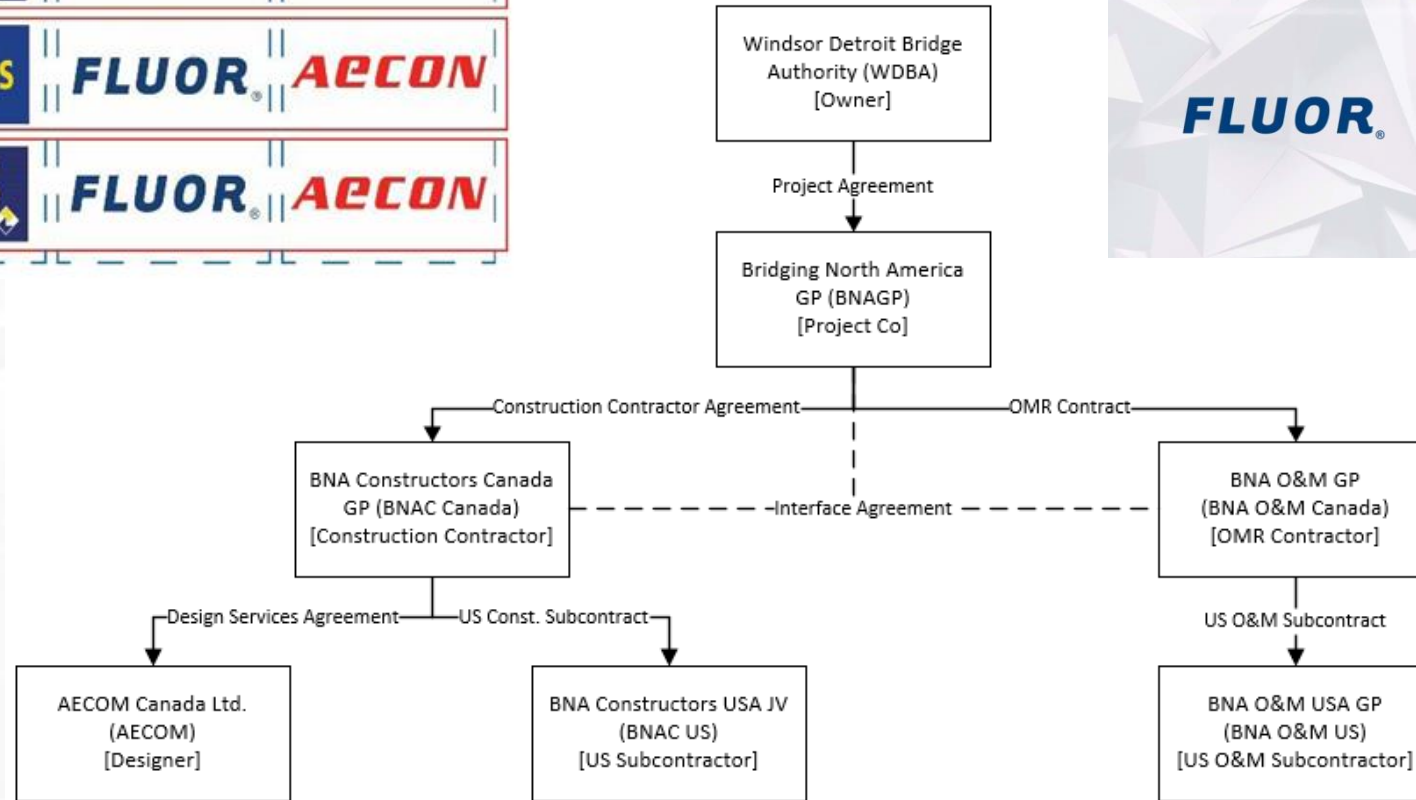


# **Jose Maria Morejón, Project Manager**

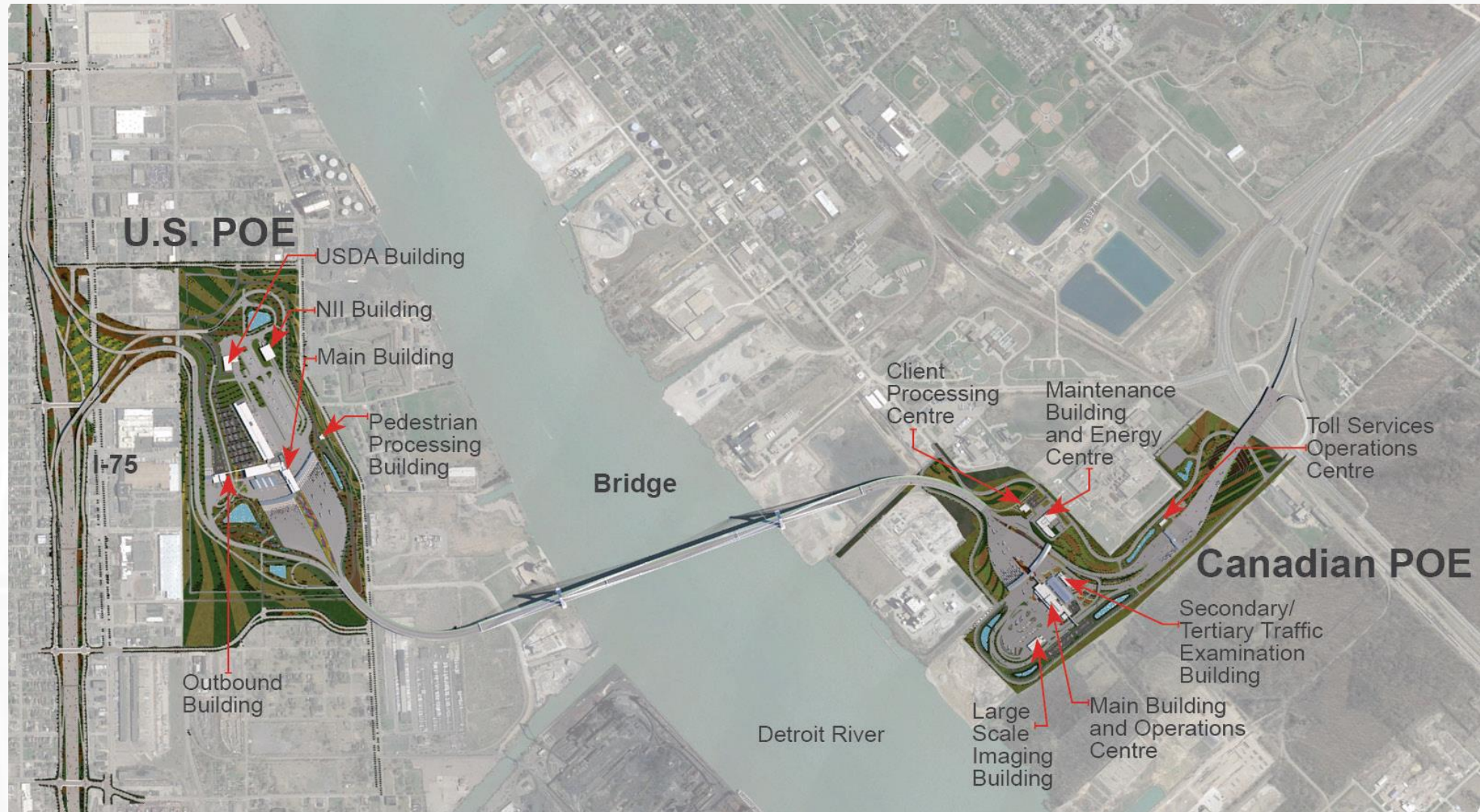
# P3 PARTNERSHIP



# BNA ORGANIZATION

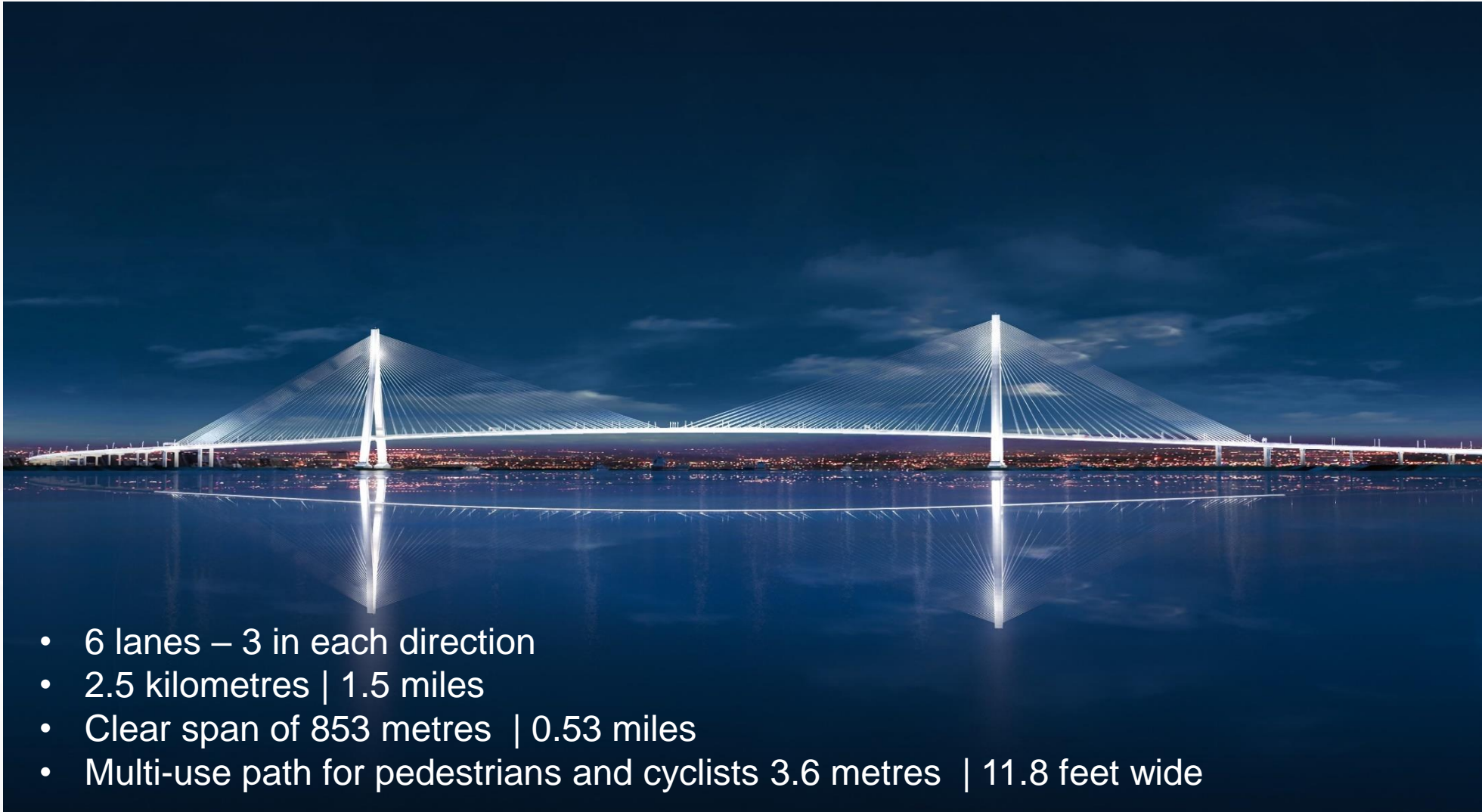


# PROJECT COMPONENTS





# THE BRIDGE

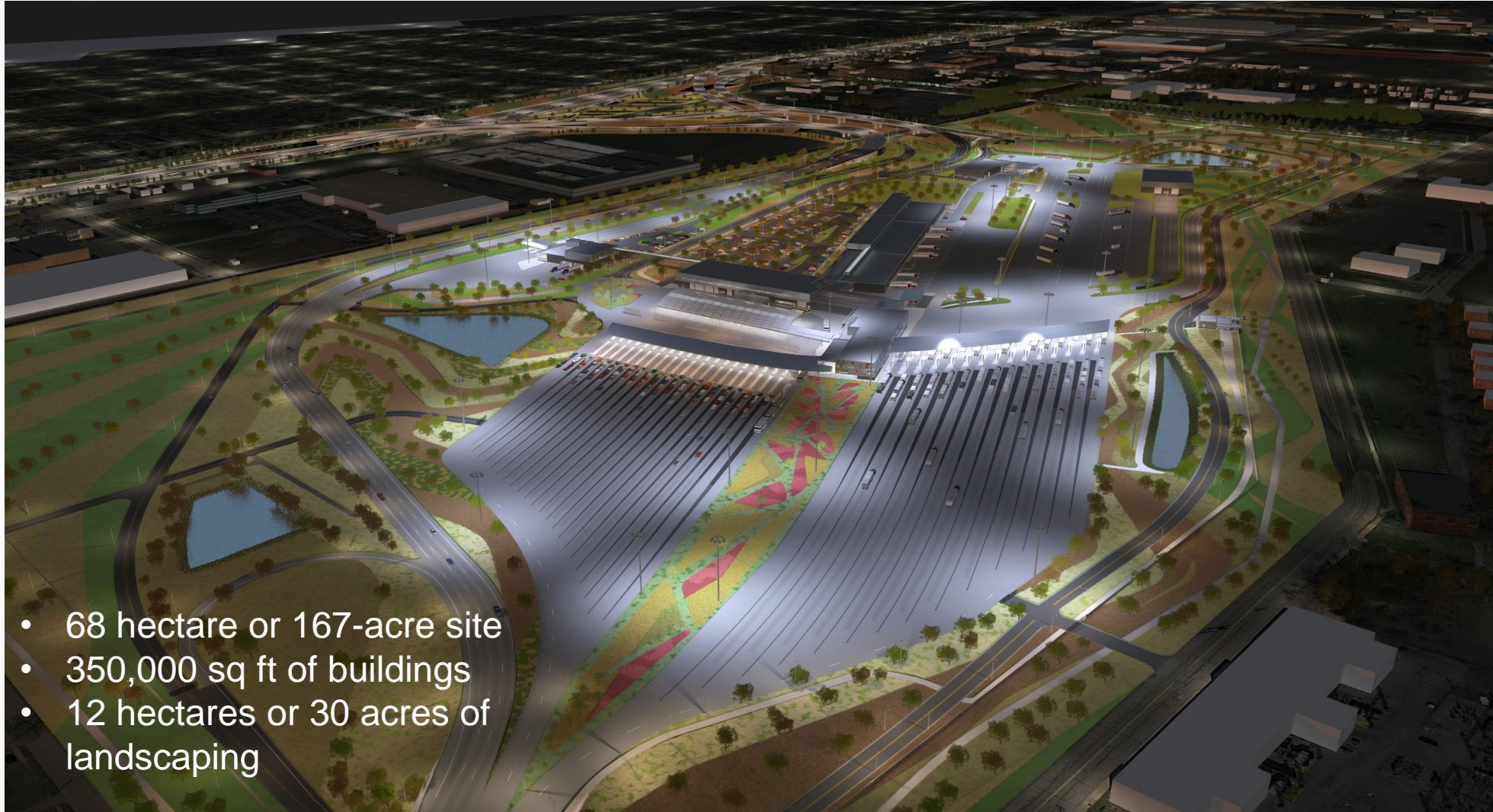


# CANADIAN PORT OF ENTRY



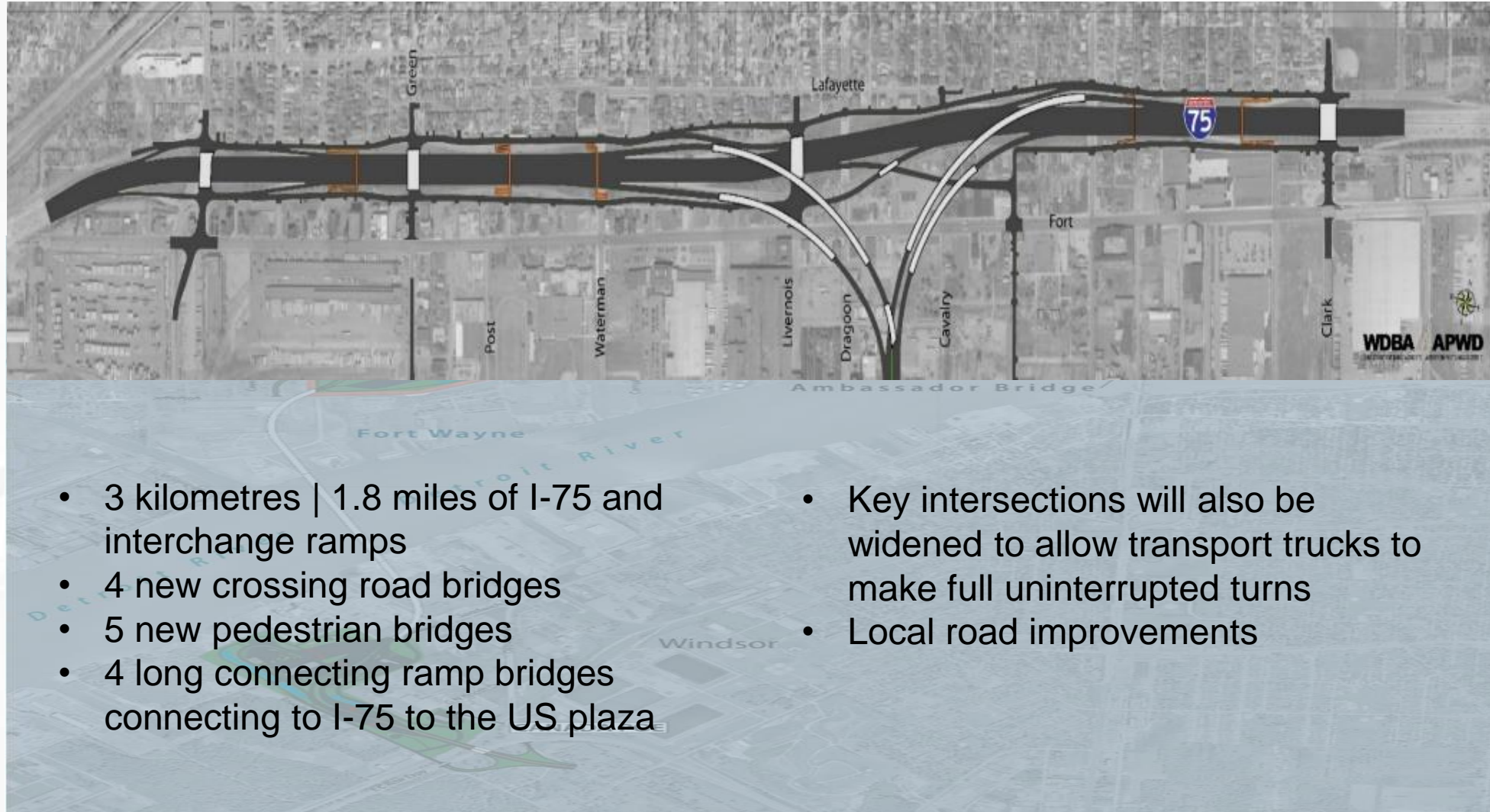
- 53 hectares or 130 acres
- 21 cubic metres of buildings
- 24 inspection booths
- 10 hectares or 24 acres of landscaping

# US PORT OF ENTRY



- 68 hectare or 167-acre site
- 350,000 sq ft of buildings
- 12 hectares or 30 acres of landscaping

# THE MICHIGAN INTERCHANGE



- 3 kilometres | 1.8 miles of I-75 and interchange ramps
- 4 new crossing road bridges
- 5 new pedestrian bridges
- 4 long connecting ramp bridges connecting to I-75 to the US plaza
- Key intersections will also be widened to allow transport trucks to make full uninterrupted turns
- Local road improvements

# **Mark MacDonald, Construction Director**

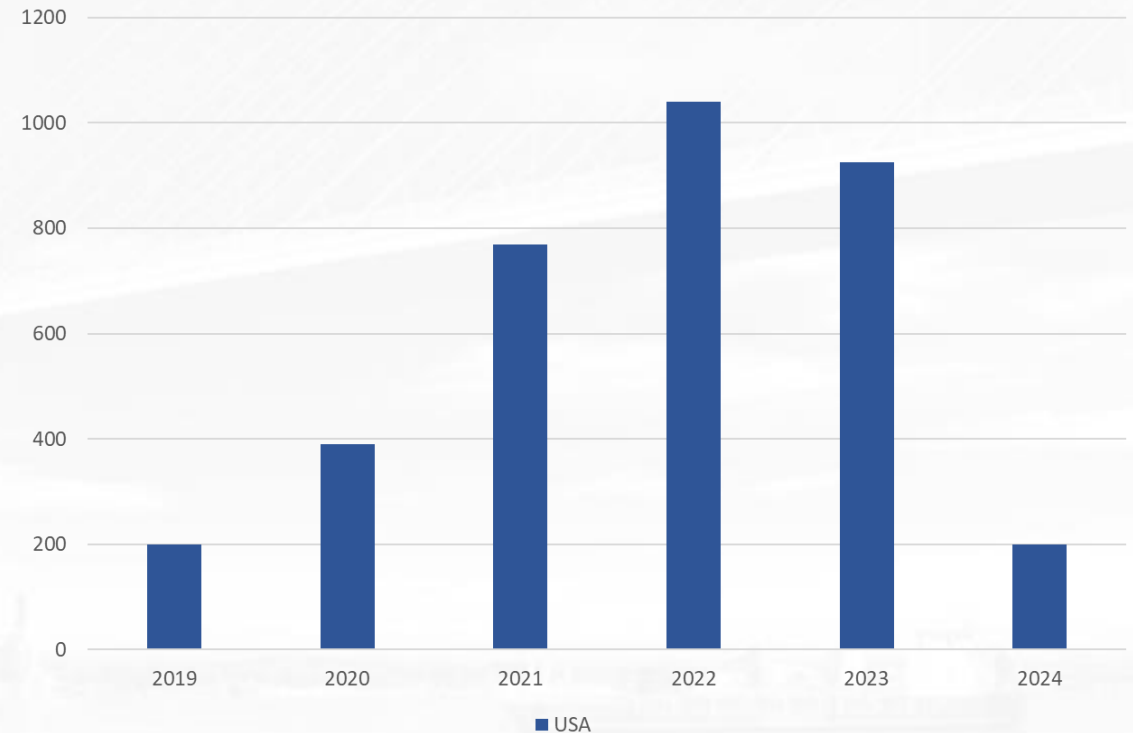
# CONSTRUCTION SCHEDULE

	2018	2019	2020	2021	2022	2023	2024
Project Start-up	■						
Design	■	■	■				
Construction	■	■	■	■	■	■	■
Bridge		■	■	■	■	■	■
Canadian POE		■	■	■	■	■	■
US POE		■	■	■	■	■	■
MI Interchange		■	■	■	■	■	■
Turnover and Commissioning						■	■

- Estimated construction duration 74 months
- 70% of construction hours will occur between 2021 – 2023
- It is anticipated that the Gordie Howe International Bridge will open to traffic by the end of 2024

# WORKFORCE

- Design work is heavy in 2019 – 2020 so staffing for trades will be low
- As design work is completed, construction will ramp for 2021-2023
- Predominantly focused on Operators, Labourers, Ironworkers, Carpenters and Specialty Trades



# **Dennis Spors, Senior Procurement Manager**



# WORKING WITH BNA PROCUREMENT

This project is unique due to the international nature: some US regulations may apply to Canada and vice versa.

Security requirements may apply to some trades – this will be disclosed at the proper time and in a limited basis. The Project includes strict security requirements related to some portions of the work.

Depending on the extent of the scope, bonds (or other reasonable securities) may be required.

A vendor registration form has been added to the Project website; however, in each RFQ/RFP up-to-date information will be requested if some time has passed since completion of that form.

# Request for Quotation / Request for Proposal (RFQ/RFP) Process

Where do I start?

[www.gordiehoweinternationalbridge.com/en](http://www.gordiehoweinternationalbridge.com/en)

**Step One:** Select the “Opportunities” tab on the website and then click “Opportunities with BNA”

# RFQ/RFP PROCESS

## PROCUREMENT OPPORTUNITIES

English

Español

Opportunities with Bridging North

Work with BNA

Procurement Opportunities

Events

### Commercial Opportunities

Bridging North America is looking to work with companies that are strong leaders in their respective lines of business and those with exceptional safety records. We are taking a "one team" approach to choosing suppliers who align with our values and standards.

#### Current Work Packages – Canada

##### Bridge:

- Assembly & Storage Equipment
- Tower Stairs – Temporary Access
- Bridge Expansion Joints
- Bridge Bearings
- Lock-Up Devices
- Tower Elevator – Temporary
- Tower Elevator - Permanent
- Rebar Assembly Templates + Spreader Beams – Pylon

##### Port of Entry:

- Building Frame Structural Steel
- Building Façade
- Roofing Systems

To request a package and NDA, contact: [procurement@bnacagp.com](mailto:procurement@bnacagp.com)

#### Current Work Packages – US

##### Bridge:

- Expansion Joints
- Approach Spans – Deep Foundations
- Concrete Pumping
- Time Lapse Video

##### Port of Entry:

- Dry Utilities – Gas
- Concrete Flatworks (Curb & Gutter, Sidewalk, etc.)
- Wet Utilities – Water
- Wet Utilities – Sanitary Sewer
- Mechanically Stabilized Earth (MSE) Walls

##### Michigan Interchange:

- Mechanically Stabilized Earth (MSE) Walls

To request a package and NDA, contact: [procurement@bnausjv.com](mailto:procurement@bnausjv.com)

## Step Two:

Select Procurement Opportunities and review current work packages by country

To request a US package & Non-Disclosure Agreement (NDA), email: [procurement@bnausjv.com](mailto:procurement@bnausjv.com)

# RFQ/RFP PROCESS

**Step Three:** Each vendor must complete and sign an NDA before receiving documents.

**Step Four:** Receive the RFQ/RFP and prepare the technical and commercial proposal. See all the documents related to providing a service.

The key document is a pricing sheet but there is also other information that must be submitted with the bid, to establish the proposal as complete.

# | **PROCUREMENT CONTACT**

For more information:

[procurement@bnausjv.com](mailto:procurement@bnausjv.com)

# ABBREVIATED PROCESS

An abbreviated process may be used for ancillary materials/services.

Some purchases (e.g. small tools, office supplies etc.) will not follow the extended process and some companies will be invited to a less demanding RFQ process.

Proposals will typically be requested via email or phone from the BNA procurement team.

Companies willing to participate shall email the BNA procurement email address. Typically the outcome is a PO but some other forms of agreement may be used.

# CONTRACT/PROJECT REQUIREMENTS

- Safety: Previous 3 years of safety records.
- Certifications may be required for specialized trades (e.g. electrical, engineering).
- Certificates of Insurance required for supply or subcontracts.
- Adoption of BNA Safety, Quality and Environmental plans is requested for any work or similar documents to be developed by the proponent.
- Must complete BNA Safety Orientation.
- All labour on site must follow requirements of Project Labor Agreements (PLAs).
- Monthly reporting to BNA (e.g. certified payroll).

# CONTRACT/PROJECT REQUIREMENTS

- BNA Monthly Reporting on Workforce Development:
  - Local workforce hiring
  - Total # of pre-apprentices and apprentices assigned to the Project
  - Local businesses engaged on the project



# | DBE GOAL

The DBE goal established for this project is 2.15% of the cost of the construction and engineering work needed to complete the Michigan Interchange and the portion of the Bridge located in Michigan.

# DBE PROCUREMENT SUPPORT

Provide additional expertise to DBEs seeking to do business with BNA USA.

Answer any specific question about the procurement process including the various forms and procedures This includes any of the subcontract exhibits, ancillary forms and bid process.



# KEY PROCUREMENT TIMINGS

2019: Dirt works, foundations and preliminary works. General equipment, tools and service contracts are being initiated.

Early 2020: More contracts related to intermediate items: structural steel for POE, roofing, cladding (building envelope in general).

By the end of 2020/2021: More finishing work out for tender.

Completion expected in 2023/2024, depending on the areas.

# PACKAGES: US BRIDGE

WORK PACKAGE	2019	2020			
	Q4	Q1	Q2	Q3	Q4
Expansion Joints	✓				
Approach Spans – Deep Foundations	✓				
Concrete Pumping	✓				
Time Lapse Video	✓				
Bridge Bearing Pads		✓			
Approach Spans – Concrete Girders		✓			
Long-Term Trucking		✓			
Temporary Power		✓			
Springwells Court Detour Road			✓		
Bridge Electrical / Lighting					✓

# PACKAGES: US POE

WORK PACKAGE	2019	2020			
	Q4	Q1	Q2	Q3	Q4
Dry Utilities – Gas		✓			
Concrete Flatwork (Curb & Gutter, Sidewalk, etc.)		✓			
Wet Utilities – Water		✓			
Wet Utilities – Sanitary Sewer		✓			
Mechanically Stabilized Earth (MSE) Walls		✓			
Drainage / Stormwater			✓		
Aggregate Base			✓		
Traffic Signals			✓		
Asphalt Paving			✓		
Exterior Electrical			✓		

# PACKAGES: MICHIGAN INTERCHANGE

WORK PACKAGE	2019	2020			
	Q4	Q1	Q2	Q3	Q4
Mechanically Stabilized Earth (MSE) Walls	✓				
Pre-Cast Noise Wall System		✓			
Roadway Lighting & Electrical		✓			
Concrete Demolition & Recycling		✓			
Communications & ITS		✓			
Permanent Signage			✓		
Bridge Bearing Pads			✓		
Concrete Flatwork (Curb & Gutter, Sidewalks, etc.)			✓		
Permanent Striping				✓	

# BREAKOUT SESSION

Hassan Melhem

Bridge

Kevin Kingston

Buildings & Civil

Jackie DeStefano

General Services & Incidentals

Kathy Williams

Help Desk

Dennis Spors

DBE

# CONTACT INFORMATION

Project website:

GordieHoweInternationalBridge.com

BNA Procurement (CAN)

[procurement@bnacagp.com](mailto:procurement@bnacagp.com)

BNA Procurement (US)

[procurement@bnausjv.com](mailto:procurement@bnausjv.com)

