

Gordie Howe International Bridge

MOMENTUM

issued by: Windsor-Detroit Bridge Authority



PONT INTERNATIONAL
**GORDIE
HOWE**
INTERNATIONAL BRIDGE

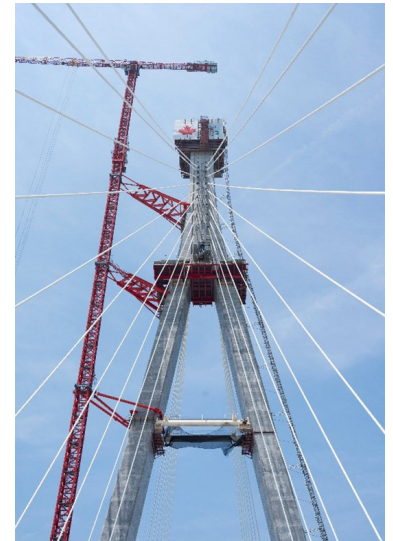
The Gordie Howe International Bridge project between Windsor, Ontario and Detroit, Michigan will help move goods and people more efficiently at this important trade gateway. Managed by Windsor-Detroit Bridge Authority (WDBA) and working in collaboration with the State of Michigan, the project is being delivered through a public-private partnership (P3) which will see Bridging North America design, build, finance, operate and maintain the bridge.

IN THIS EDITION

- Towers Reaching Final Heights
- People Profile
- Windsor-Detroit Bridge Authority Welcomes New CEO
- Art at the Gordie Howe Bridge
- In The Community
- All Four Detroit Road Bridges Now Open
- Local Detroit Road Improvements
- Kid Zone
- Malden Park Observation Area Construction

TOWERS REACHING FINAL HEIGHTS

The final countdown has begun for the towers on the Gordie Howe International Bridge project to reach their final height. The public will see major changes at the US bridge tower over the coming weeks. The last concrete pour for the sloped architectural heads at the top of the upper pylon is now complete and the US tower has reached its full height of 220 metres/722 feet. Crews will be removing the jump form system which includes artwork by local Detroit-based artist Roberto Villalobos. These last steps are anticipated to begin at the Canadian bridge tower in September. This event marks a significant point in the construction of the Gordie Howe International Bridge and is a celebration of the determination, commitment and hard work of our staff, contractors and suppliers.



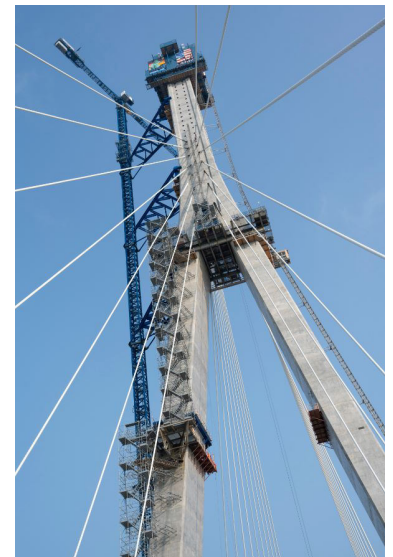
Canadian Tower

Tower construction started in 2019, with underground work. Each tower leg is supported by six shafts that were drilled into the bedrock to a depth of 36 metres/118 feet – the equivalent of an 11-storey building.

Above ground, each tower is an inverted “Y” shape and made of cast-in-place reinforced concrete to achieve their aesthetic design and functionality. The total height of one tower is composed of 51 different segments constructed using a jump form climbing system. The full weight of just one tower is approximately 30,000 metric tonnes/66 million pounds – the weight of 165 jumbo jets.

Twenty-seven anchor boxes and eight formwork boxes are installed inside the pylon head of the tower to hold the stay cables that will connect and support the bridge deck and future roadway. Together, the bridge towers and stay cables of the Gordie Howe International Bridge have been designed to accommodate a traffic load consisting of commercial vehicles and mixed vehicles. Read more about the towers on

GordieHoweInternationalBridge.com.



US Tower

CONTACT US

Have a question about the Gordie Howe International Bridge project?

Meet with our team at our Sandwich Community Office at **3201 Sandwich St.** or Southwest Detroit Community Office at **7744 W Vernor Hwy.**

Available office hours can be found on GordieHoweInternationalBridge.com.

Call us toll-free at **1-844-322-1773**, email us at info@wdbbridge.com, or message us through any of the project social media accounts.



PEOPLE PROFILE

MEET DARIYA PROTCHEVA

Dariya is a US Approach Field Engineer on the US Bridge Segment for Bridging North America. She graduated with a Master of Construction Engineering and Management degree from the University of Michigan. Dariya was born and raised in the Ukraine and moved to the US after high school to complete her undergraduate and graduate studies.

Q. What type of work are you doing on the project?

As a Field Engineer, I am responsible for pre-planning the methods for the work activities on the US approach bridge. This part of the bridge connects the main span over the water to the Port of Entry. I provide technical support for daily construction activities. I ensure the work as planned is carried out in a safe manner with all hazards recognized and mitigated before work begins.

Q. What is the most rewarding part of working on the project?

The Gordie Howe International Bridge project is a once-in-a-lifetime experience where I have the opportunity to work with world-class engineers, architects, superintendents and construction crews daily. All these people have a tremendous amount of skill and knowledge used to bring the most complex engineering project into reality. There is nothing better than being surrounded by talented people who work towards the same goal that is recognized nationwide.

Q. What do you wish other people knew about the project?

The Gordie Howe International Bridge project is a landmark project that will be a critical link in the bi-national highway infrastructure system. Behind the scenes, there is an experienced team of engineers and construction workers who build the structure in different segments. Some of the means and methods we use are unique and it is very exciting to show what it takes to build structure like the bridge.



DARIYA PROTCHEVA

US Approach Field Engineer – US Bridge Segment – Bridging North America

WINDSOR-DETROIT BRIDGE AUTHORITY WELCOMES NEW CEO

In June, the Government of Canada appointed Charl van Niekerk to the position of Chief Executive Officer (CEO) of Windsor-Detroit Bridge Authority (WDBA). Mr. van Niekerk officially stepped into his role on July 25, 2023.

Mr. van Niekerk recently held the position of Executive Vice President – Transportation at Infrastructure Ontario and brings a wealth of experience in infrastructure planning and delivery, asset management and operational management in the public and private sectors. He has significant experience overseeing the delivery of complex provincial highway, subway and rail projects, including the successful delivery of the Rt. Hon. Herb Gray Parkway that connects into the Gordie Howe International Bridge.

“The Gordie Howe International Bridge project is both history making and future building. I am eager to start working with WDBA staff, the Government of Canada, project partners and key stakeholders as we complete construction, open the bridge and connect cross-border travellers through the newest and most inspiring landmark between Canada and the US. It is an honour to be named as WDBA’s CEO.”

- Charl van Niekerk, CEO, WDBA



ART AT THE GORDIE HOWE INTERNATIONAL BRIDGE

The Visual Art Program on the Gordie Howe International Bridge project was developed to create memorable, high-quality works of art consistent with the international importance of the bridge and to celebrate and promote creativity and friendship between Canada and the US. Public art is an integral part of the Gordie Howe International Bridge project overall aesthetics and is the result of years of public and stakeholder consultation. Multiple art commissions have been identified for inclusion into the project. These include:

- **an artistic building facade at the Canadian Port of Entry**
- **a standalone Indigenous art commission**
- **dramatic and dynamic bridge lighting at night.**

The first commission, an artistic building façade, was completed last year by Canadian artist Sarah Graham and was publicly unveiled in February 2023, at the Canadian Port of Entry.

In June 2023, the project team announced the selection of Michael Belmore, a celebrated Anishinaabe artist, for the standalone Indigenous commission. The concept is currently in process.

In March 2023, the project team announced a new commemorative art commission. A free-standing sculpture will be installed near the Canadian Port of Entry to serve as an expression of Canadian identity and history with regard to the Underground Railroad. Located in an accessible area, people will be able to visit and reflect on the sacrifices made in the quest for freedom. The artist selection process is anticipated to be complete later this summer. The final art concept will be shared in late 2023.

Artist selection for the bridge lighting commission will begin in 2024.

IN THE COMMUNITY

MEET-A-MACHINE

In June, the WFCU Centre held their annual Meet-A-Machine event hosted by the City of Windsor. Kids of all ages had a chance to get up close to construction equipment, emergency vehicles and many more machines. Attendees were excited to learn about some of the machines being used to construct the Gordie Howe International Bridge. Project staff handed out children's construction hats and activity sheets to help kids feel like a construction worker for the day.



COMMUNITY OFFICE HOURS

WDBA's Sandwich and Southwest Detroit Community Offices are now open to visitors without appointments on Tuesdays and Thursdays. Project staff are available to provide the latest project information, design and construction updates and answer questions or concerns.

Southwest Detroit office hours:

- Tuesdays 10:00 a.m. – 4:00 p.m.
- Thursdays 10:00 p.m. – 4:00 p.m.
- After-business appointments may be available upon request

Sandwich office hours:

- Tuesdays 10:00 a.m. – 4:00 p.m.
- Thursdays 10:00 a.m. – 4:00 p.m.
- After-business appointments may be available upon request

DIVERCITY BBQ

In July, Windsor Police Services held their annual DiverCity BBQ at Mic Mac Park in Windsor. Hundreds attended this free event and were excited to play games and learn about the Gordie Howe International Bridge project and other community resources. Staff handed out the latest construction update and discussed the inclusion of the multi-use path on the project for pedestrians and cyclists.



2023 COMMUNITY ORGANIZATION INVESTMENT INITIATIVE RECIPIENTS

The Gordie Howe International Bridge project team announced 14 recipients of the 2023 Community Organization Investment initiative that is part of the project Community Benefits Plan. Seven Windsor and seven Detroit initiatives collectively received \$200,000 (CDN) in funding:

ENHANCING QUALITY OF LIFE

Organization: Journey Home Hospice Windsor, Saint Elizabeth Foundation

NOISE REDUCTION AT THE HELPING HANDS FRIENDSHIP CENTRE

Organization: Society of St. Vincent de Paul

GREEN SPACE RECLAMATION

Organization: Les Amis Duff-Bâby

BRIDGING THE GAP: THE SANDWICH DEMENTIA SERIES

Organization: Alzheimer Society of Windsor and Essex County

SPAYING AND NEUTERING COMMUNITY CATS IN SANDWICH

Organization: Windsor/Essex County Humane Society

WOMEN CAN SUMMIT

Organization: Border City Athletics Club

RAINBOW PAINTINGS ON PAVEMENT

Organization: John McGivney Children's Centre

CHASS MERCADO SUMMER PROGRAM

Organization: Community Health and Social Services (CHASS)

THE SOUTHWEST DETROIT PORTRAIT STUDIO

Organization: Capturing Belief

FOOD FOR UNHOMED INDIVIDUALS

Organization: Trinity St. Mark's Pantry and Gardens

CINCO DE MAYO PARADE AND FIESTA

Organization: Mexican Patriotic Committee of Metro Detroit

GRANTS FOR YOUTH SPORTS IN SOUTHWEST DETROIT

Organization: Hispanic Police Officers' Association of Michigan-Detroit Chapter

DELRAY-SOUTHWEST ENGAGEMENT AND FAMILY DAYS

Organization: Southwest Detroit Community Benefits Coalition

SUMMER PROGRAM KICKOFF AND WINTER CARNIVAL

Organization: Clark Park Coalition

The 2024 Community Organization Investment initiative will open in November 2023, offering non-profits and charitable organizations an opportunity to share in the \$200,000 (CDN) available. Funding will be released to successful applicants the following July. 2024 marks the final year for this initiative, which is being delivered as part of the Neighbourhood Infrastructure Strategy of the Gordie Howe International Bridge Community Benefits Plan.

ALL FOUR DETROIT ROAD BRIDGES NOW OPEN

The Gordie Howe International Bridge project team is excited to announce the reopening of the fourth and final road bridge reconstructed as part of the Michigan Interchange activities.

The Green Street road bridge connects communities over I-75 between Fort Street and the I-75 Service Drive. It follows the 2022 reopening of the Clark Street, Springwells Street and Livernois Avenue connections over I-75.

Together, the four road bridges provide the public with easy access to green spaces, neighbourhoods and businesses. Read more about these road bridges on [GordieHoweInternationalBridge.com](https://www.gordiehoweinternationalbridge.com).



LOCAL DETROIT ROAD IMPROVEMENTS

Michigan Interchange activities on the Gordie Howe International Bridge project also include associated local road improvements. Over a dozen roadway and pedestrian bridges crossing I-75 and ranging in length from 30 to 518 metres or 100 to 1,700 feet are included in the overall work.

Current road work includes:

- utility exploration and pavement removal is underway on Livernois Avenue between Fort Street and the railroad tracks.
- curb and sidewalk cement pours are taking place between Central Avenue and Green Street on the Service Drives.
- I-75 widening work continues between Central Avenue and Livernois Avenue with concrete placement for pavement, valley gutters, curbs and barriers.
- watermain installation is taking place on Campbell Street.
- siphon work is underway on Military Avenue including backfill elbow block construction and chamber construction.
- pedestrian ramp backfill on Solvay Street has started.
- sheet piling work on Dagoon Street southbound is anticipated to begin shortly.
- siphon work on Morell Street and Ferdinand Street is anticipated to begin shortly.

KID ZONE

Trucks, cars, pedestrians and cyclists will be crossing the Gordie Howe International Bridge. Use your imagination to draw your own vehicle that could cross the bridge on opening day.

Take a photo of your design and post it to Instagram tagging [@GordieHoweBrg](https://www.instagram.com/GordieHoweBrg).



MALDEN PARK OBSERVATION AREA CONSTRUCTION

The Malden Park Observation Area in Windsor will provide an attractive, safe location, using an existing high elevation in the region for residents, students and tourists to observe the construction of the Gordie Howe International Bridge.

Final approvals are underway on the Observation Area design, with construction anticipated to take place this summer. Once started, construction is anticipated to last up to seven weeks.

Construction activities include:

- excavation of the observation area
- foundational work and granular fill (mixed gravel)
- landscaping including mulch and planting trees and shrubs
- installation of furnishings like benches, railings and binoculars.