



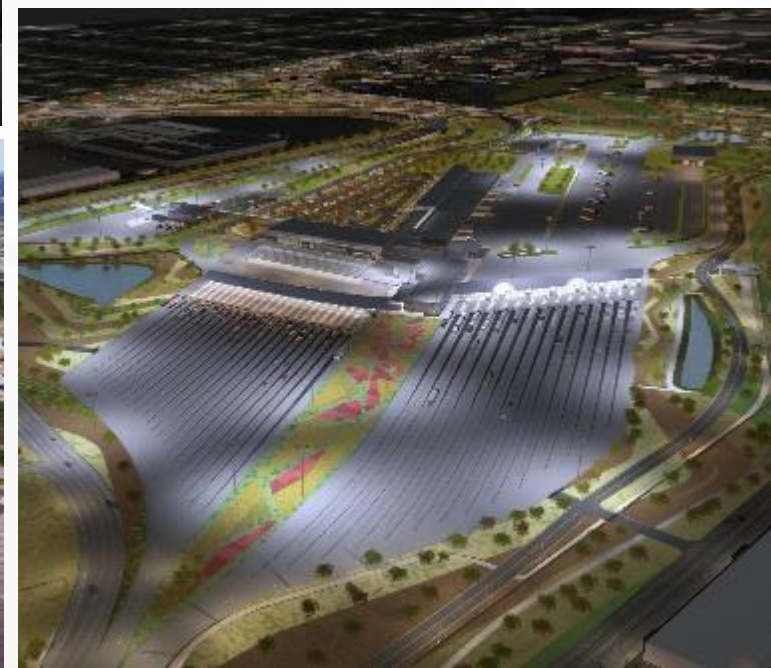
PONT INTERNATIONAL
GORDIE
HOWE
INTERNATIONAL BRIDGE



PUBLIC INFORMATION MEETING #27

March 19, 2024

PROJECT COMPONENTS



CONTRACT UPDATES

The fixed contract value for the Gordie Howe International Bridge project is \$6.4 billion CDN (nominal)

Length of contract is 37 years

Construction completion is planned for September 2025

1-year Community Benefits Plan extension with additional \$3 million



CONSTRUCTION UPDATE: BRIDGE SITES



CONSTRUCTION UPDATE: US PORT OF ENTRY



CONSTRUCTION UPDATE: CANADIAN PORT OF ENTRY



CONSTRUCTION UPDATE: MICHIGAN INTERCHANGE (I-75)



LOCAL ROAD IMPROVEMENTS



Reconstruction and realignment of:

- **Green Street** (in progress)
- **Campbell Street** (in progress)
- **Livernois Avenue** (in progress)

Reconstruction and reconfiguration of the following intersections:

- West End Street and Fort Street (**complete**)
- West End Street and W. Jefferson Avenue (**complete**)
- Dearborn Street and W. Jefferson Avenue
- Clark Street and Fort Street (**complete**)
- Clark Street and W. Jefferson Avenue (**complete**)

Road resurfacing will take place on:

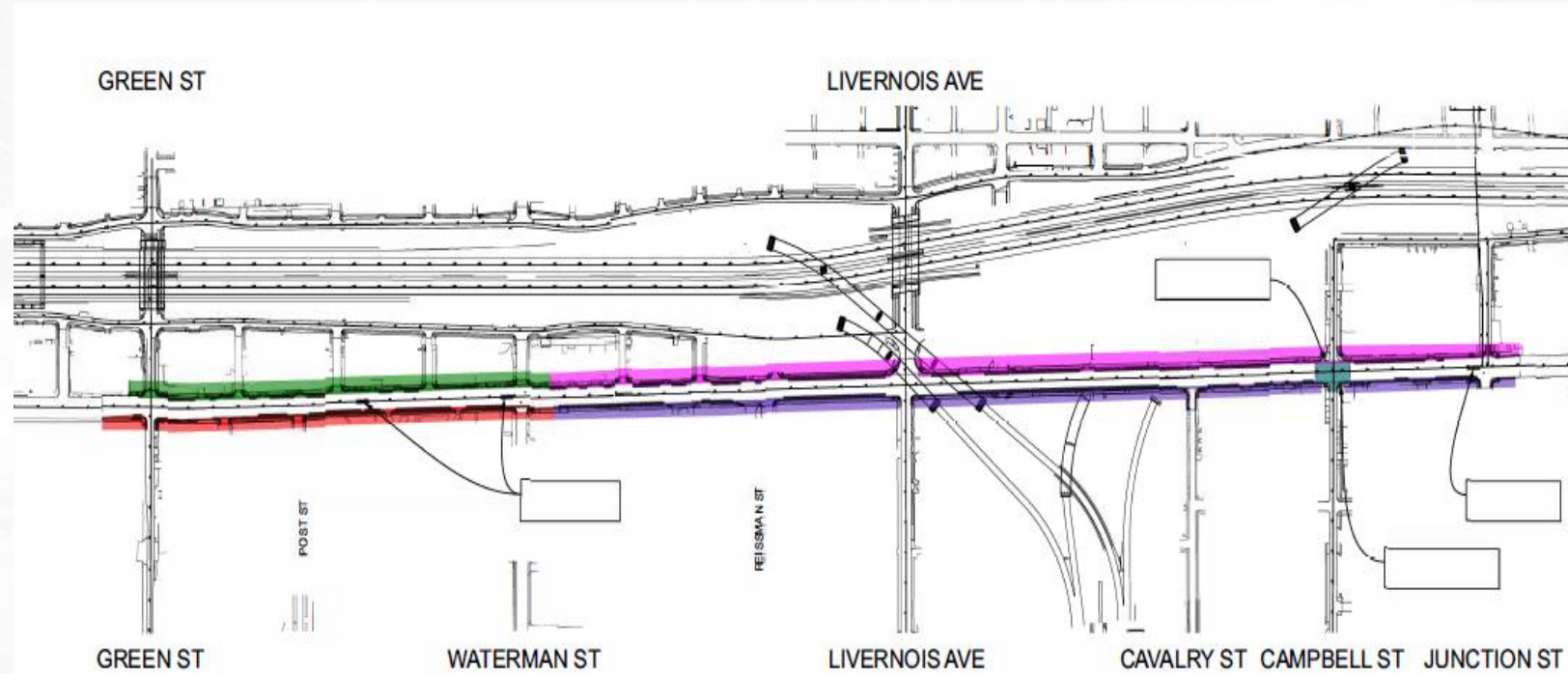
- **East and westbound I-75 Service Drives** (in progress)
- **Fort Street** (in progress)
- **Cavalry Street**
- **W. Jefferson Avenue** (in progress)

FORT STREET ROAD IMPROVEMENTS

EASTBOUND FORT STREET

Anticipated timelines:
January – Summer 2024

- CURRENT:**
 - Green Street to Waterman Street.
 - Waterman Street to Junction Avenue
- SPRING**
 - Intersection of Fort Street and Campbell Street



COMMUNITY BENEFITS PLAN



The Workforce Development and Participation Strategy is geared toward engaging businesses and individuals and focuses on supporting workforce, training and pre-apprenticeship/apprenticeship opportunities.



The Neighbourhood Infrastructure Strategy focuses on collaborating with stakeholders and community members through consultation to develop a community investment strategy based on identified priorities.

US Bridge Site

WORKFORCE DEVELOPMENT AND PARTICIPATION STRATEGY

Cumulative Totals from September 2018 – December 2023

11,415+

individuals oriented to the project in Canada and the US

42% are local



690+

apprentices/pre-apprentices assigned to the project



350+

co-operative learning experiences have been provided on the project



275+

local businesses engaged on the project

NEIGHBOURHOOD INFRASTRUCTURE STRATEGY



COMMUNITY BENEFITS PLAN ANNOUNCEMENT: \$2.6 MILLION INVESTMENT - 13 NEW INITIATIVES



DELRAY HOME IMPROVEMENT PROGRAM

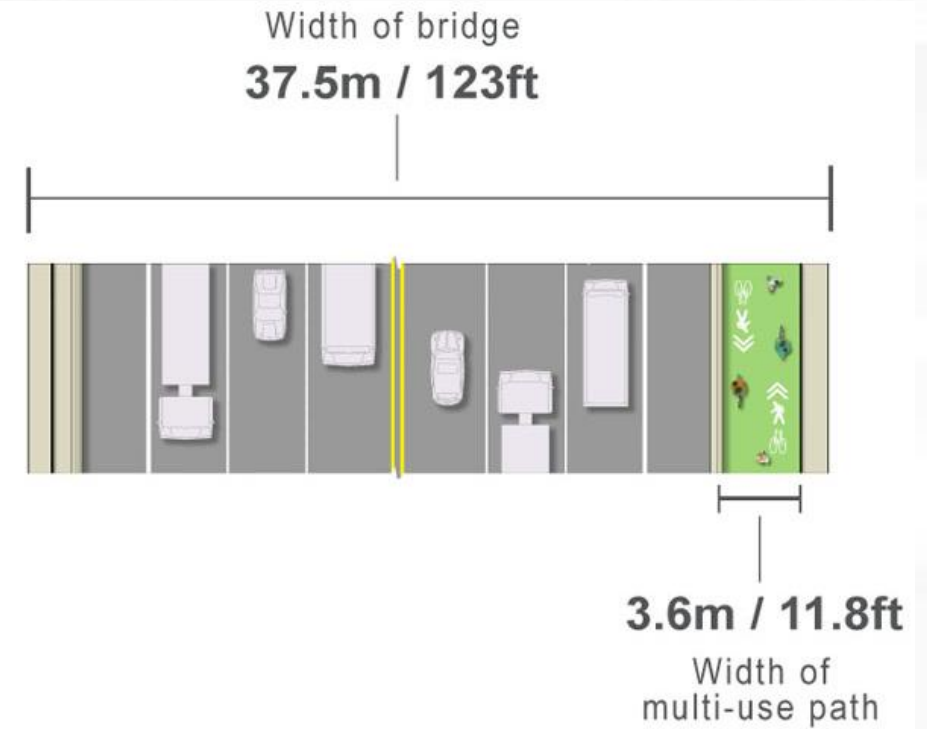


- The program is now full – **applications are no longer accepted.**
- Over 100 homes have had or are in process of repairs.
- Construction on remaining homes will continue over the coming months.

GORDIE HOWE INTERNATIONAL BRIDGE JOINS THE TRANS CANADA TRAIL



MULTI-USE PATH



LEGEND

- 1. BRIDGE MULTI-USE PATH**
- 2. GREEN ST. MULTI-USE PATH/BIKE LANES (W. JEFFERSON AVE. - FORT ST.)**
- 3. W. JEFFERSON AVE. MULTI-USE PATH (GREEN ST. TO CAMPBELL ST.)**
- 4. CAMPBELL ST. MULTI-USE PATH/BIKE LANES (W. JEFFERSON AVE. - FORT ST.)**
- 5. FORT ST. BIKE LANES (GREEN ST. - JUNCTION AVE.)**

PEDESTRIAN/CYCLIST PROCESSING BUILDING

MULTI-USE PATH ACCESS





3

1

2

**PEDESTRIAN/CYCLIST
PROCESSING BUILDING**

**MULTI-USE
PATH ACCESS**

LEGEND

1. BRIDGE MULTI-USE PATH

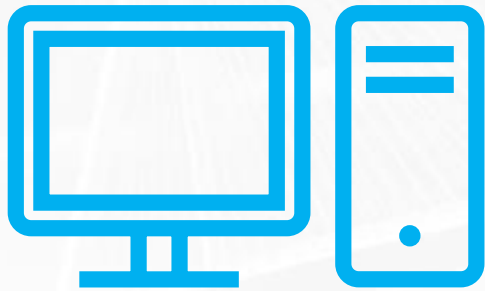
**2. SANDWICH ST. MULTI-USE PATH
(SANDWICH ST. - CANADIAN POE)**

**3. CANADIAN POE MULTI-USE PATH
(BROADWAY ST. - SANDWICH ST.)**



CANADIAN PORT OF ENTRY

SHARE YOUR FEEDBACK ON THE MULTI-USE PATH



**TAKE AN
ONLINE SURVEY**



**FILL OUT A
PAPER SURVEY**



CHAT WITH STAFF



COMMUNITY OFFICE:

7744 W. Vernor Highway, Detroit, MI

Tuesdays 10:00 a.m. – 4:00 p.m.

Thursdays 10:00 a.m. – 4:00 p.m.

After-business appointments may be available upon request

QUESTIONS:

- Public inquiry line: 1-844-322-1773
- Info@wdbridge.com
- Visiting the Sandwich or Southwest Detroit Community Office

LEARN MORE

 gordiehoweinternationalbridge.com

 1-844-322-1773

 @gordiehowebrg

 @gordiehowebridge

 Gordie Howe Bridge

 @gordiehowebrg

 WDBA-APWD

