

WDBA APWD

WINDSOR-DETROIT BRIDGE AUTHORITY | AUTORITÉ DU PONT WINDSOR-DETROIT

Annual Public Meeting
Windsor, Ontario
February 11, 2016

Canada 



Canada – US Trade

Windsor-Detroit Gateway

Windsor-Detroit is the busiest commercial land border crossing on Canada-U.S. border and one of busiest in North America:



WINDSOR-DETROIT CONSISTS OF
FOUR CROSSINGS



CANADA-U.S. TRADE

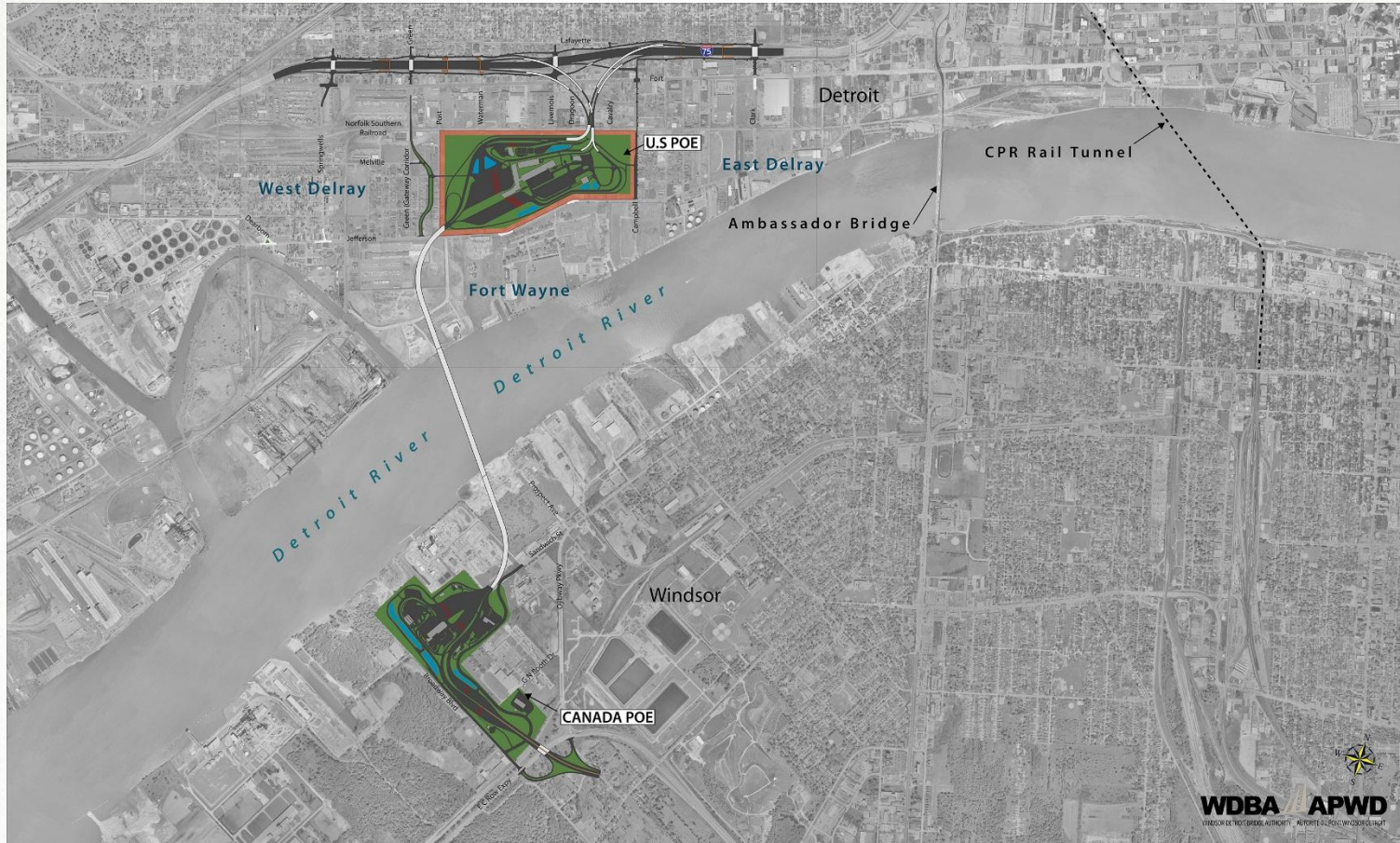


Windsor-Detroit Crossing
25%
Total Canada-U.S. trade

2.5 MILLION TRUCKS PER YEAR



Bridge Components



Component Key Features: Bridge

- Two design types could be used for this signature Bridge:
 - Suspension, which is recognized by its elongated “M” shape; or
 - Cable-stayed, which has more of an “A” shape.
- Clear span of 850 metres / 0.53 miles with no piers in the water
- One approach bridge on each side of the crossing to connect Ports of Entry in Canada and the US
- Total length of approximately 2.5 kilometres / 1.5 miles

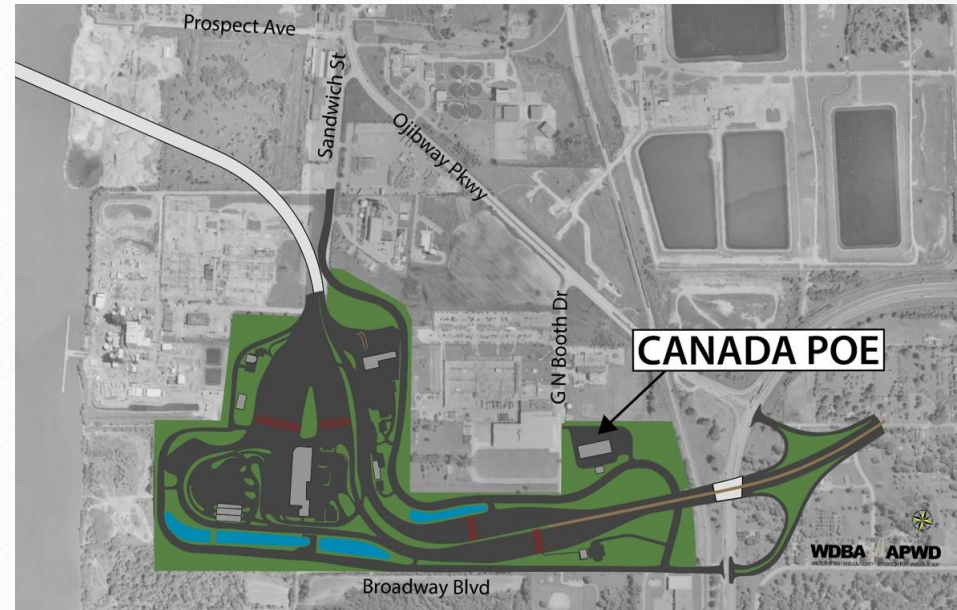


Once complete, the Gordie Howe International Bridge will be among the top five longest bridges in North America.



Component Key Features: Canadian Port of Entry

- Approximate 53 hectare / 130 acre site
- Inbound border inspection facilities for both passenger and commercial vehicles
- Outbound inspection facilities
- Toll collection facilities
- Maintenance facility
- Parking



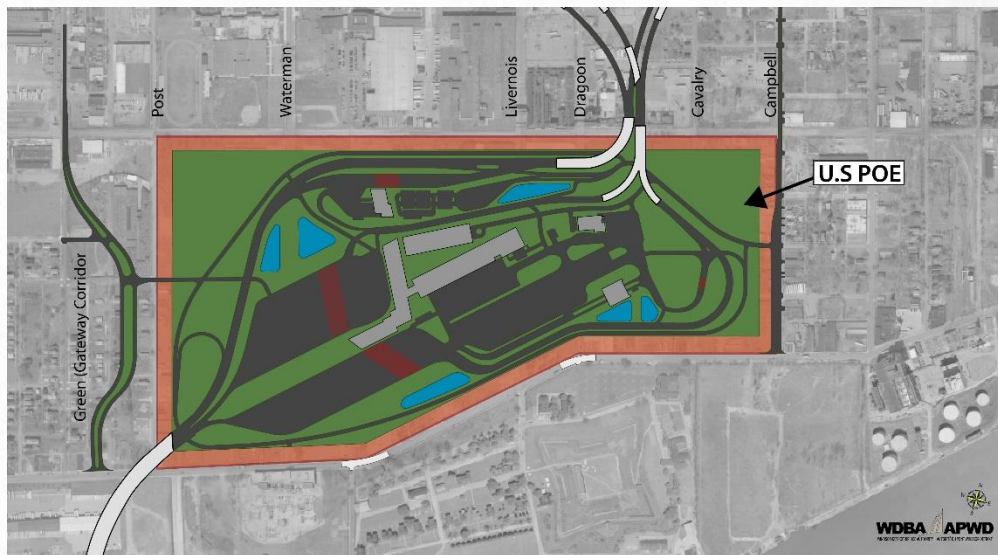
Once constructed, this port will be the largest Canadian port along the Canada-US border and one of the largest anywhere in North America.

The footprint allows for the installation of further technology and the addition of expanded border processing facilities.



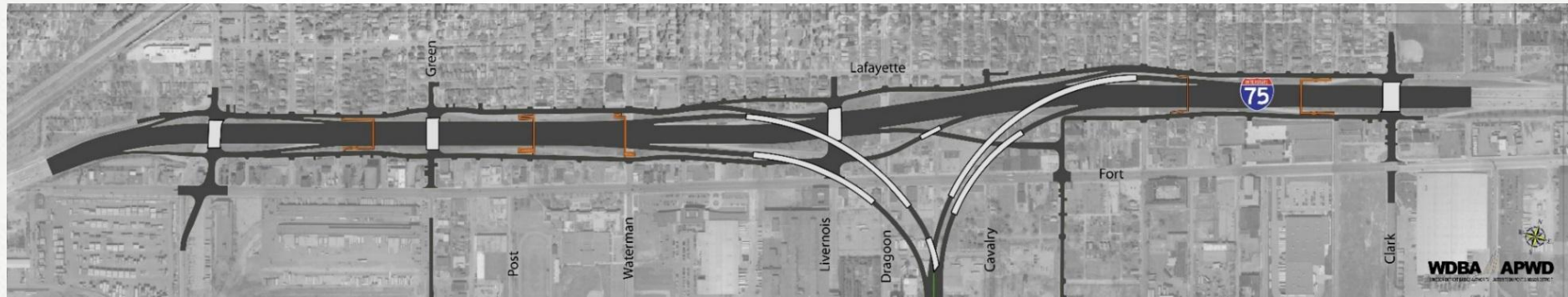
Component Key Features: US Port of Entry

- Approximate 148 acres / 60 hectare site
- US inbound border inspection facilities for both passenger and commercial vehicles
- US outbound inspection facilities
- Commercial exit control booths
- Parking

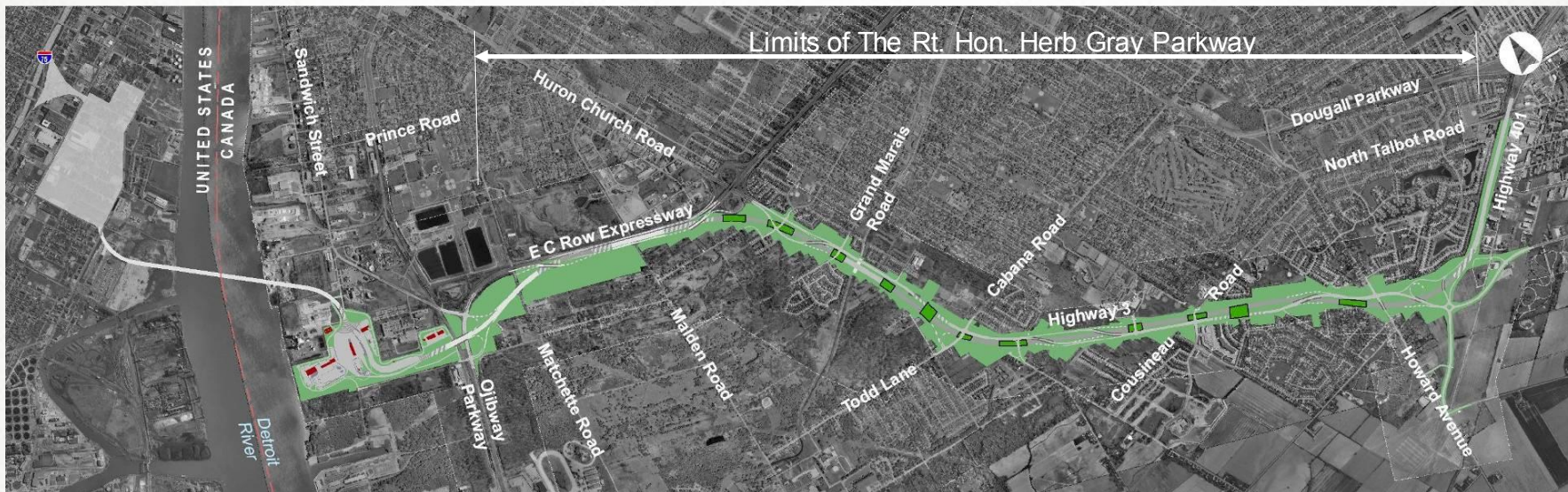


Component Key Features: Michigan Interchange to Interstate-75

- Primary connecting ramps to and from the US POE:
- Local road improvements including:
 - 4 new crossing road bridges
 - 5 new pedestrian bridges
 - Widened roads at key intersections



Rt. Hon Herb Gray Parkway



Windsor-Detroit Bridge Authority

- A not-for-profit Canadian Crown corporation
- Reports to Parliament through the Government of Canada
- Manages the procurement process for the design, construction, financing, operation and maintenance of the new bridge through a public-private partnership (P3)
- Will oversee the work of the P3 partner and will manage the concession agreement and payments



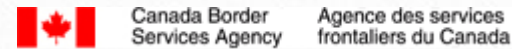
WDBA Executive Leadership



WDBA Staff



Who's Involved



U.S. Customs and Border Protection



Traffic Management and Tolling Systems

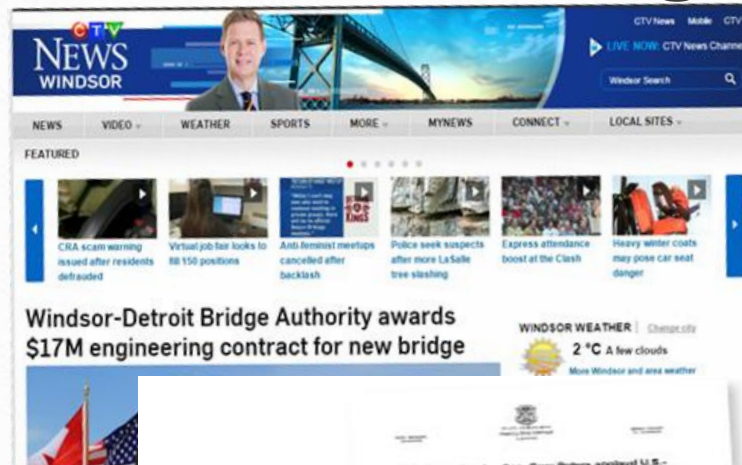
- Integration into existing ITS systems
- Variable message boards
- Ways to expedite toll collection

The screenshot shows a news website with the following content:

- Windsor Star Header:** NEWS BUSINESS OPINION SPORTS ARTS LIFE CAREERS OBITS CLASSIFIEDS DRIVING SIGN IN SUBSCRIBE
- Main Article:** "New bridge subcontractor wants input on tolling, lighting system preferences" by Dave Ratyasko. Published on September 21, 2014.
- Daily Commercial News Section:** Includes a search bar, navigation tabs (Economic, Associations, Projects, Government, Labour, Resource, Infrastructure, OH&S, Technology), and a "NEW!" banner for "Express CSP Search".
- Article Content:** "Delcan awarded DRIC crossing toll design contract" by Richard G. Rbert. The article mentions that Delcan Corporation has been awarded a contract by the Windsor-Detroit Bridge Authority (WDBA) for the transportation and tolling systems on the Detroit River International Crossing (DRIC).
- Advertisement:** "myjobsite.ca NicheNetwork" with the tagline "Your gateway to the top careers in construction and design. Learn more."

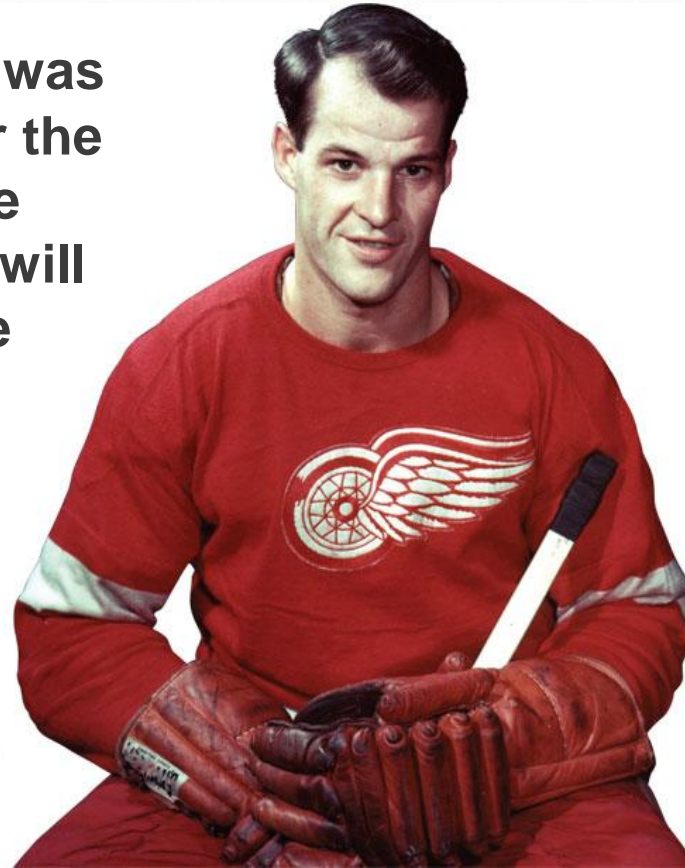


Engineering Contract Award and US Plaza Arrangement



Gordie Howe International Bridge

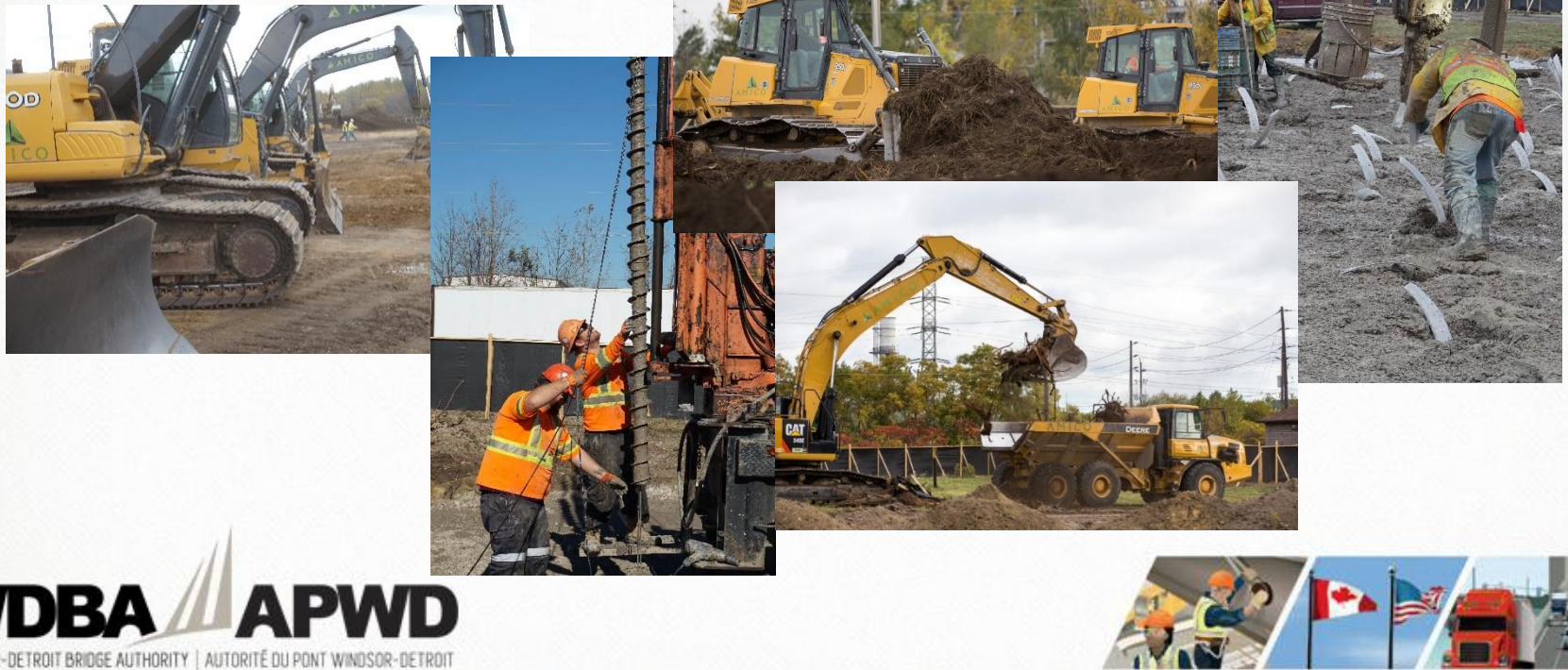
“A proud Canadian who was equally proud to play for the Detroit Red Wings, Howe built extraordinary goodwill between Canada and the United States. “



Early Works

Early Works will help facilitate timely completion of the 53 hectare / 130 acre Canadian POE. Early Works activities include:

- **Perimeter Access Road (PAR)**
- **Utilities Relocation**
- **Fill Placement**



P3 Procurement Process

- RFQ release in July 2015
- Introductory Project Meetings and Industry Days were held in Windsor and Detroit in August
- Six North American and international respondent teams submitted responses
- Responses were evaluated by WDBA officials and partner organizations under the supervision of an independent fairness monitor
- The WDBA announced three Shortlisted Respondents in January of 2016



Stay Connected

Visit www.wdbridge.com
for up-to-date project information.

Facebook: www.facebook.com/wdbabridge

Twitter: www.twitter.com/wdbabridge

LinkedIn: www.linkedin.com

YouTube: www.youtube.com

Instagram: www.instagram.com/windsordetroitbridgeauthority

Contact Windsor-Detroit Bridge Authority

100 Ouellette Avenue

Suite 400

Windsor, ON N9A 6T3

1-519-946-3038

info@wdbridge.com

