

# Meet the Contractor



Thank you for joining us.

Please be sure to mute your microphone.

We will begin shortly!



# Bridging North America

Local Canadian Vendor Summit – October 29, 2020

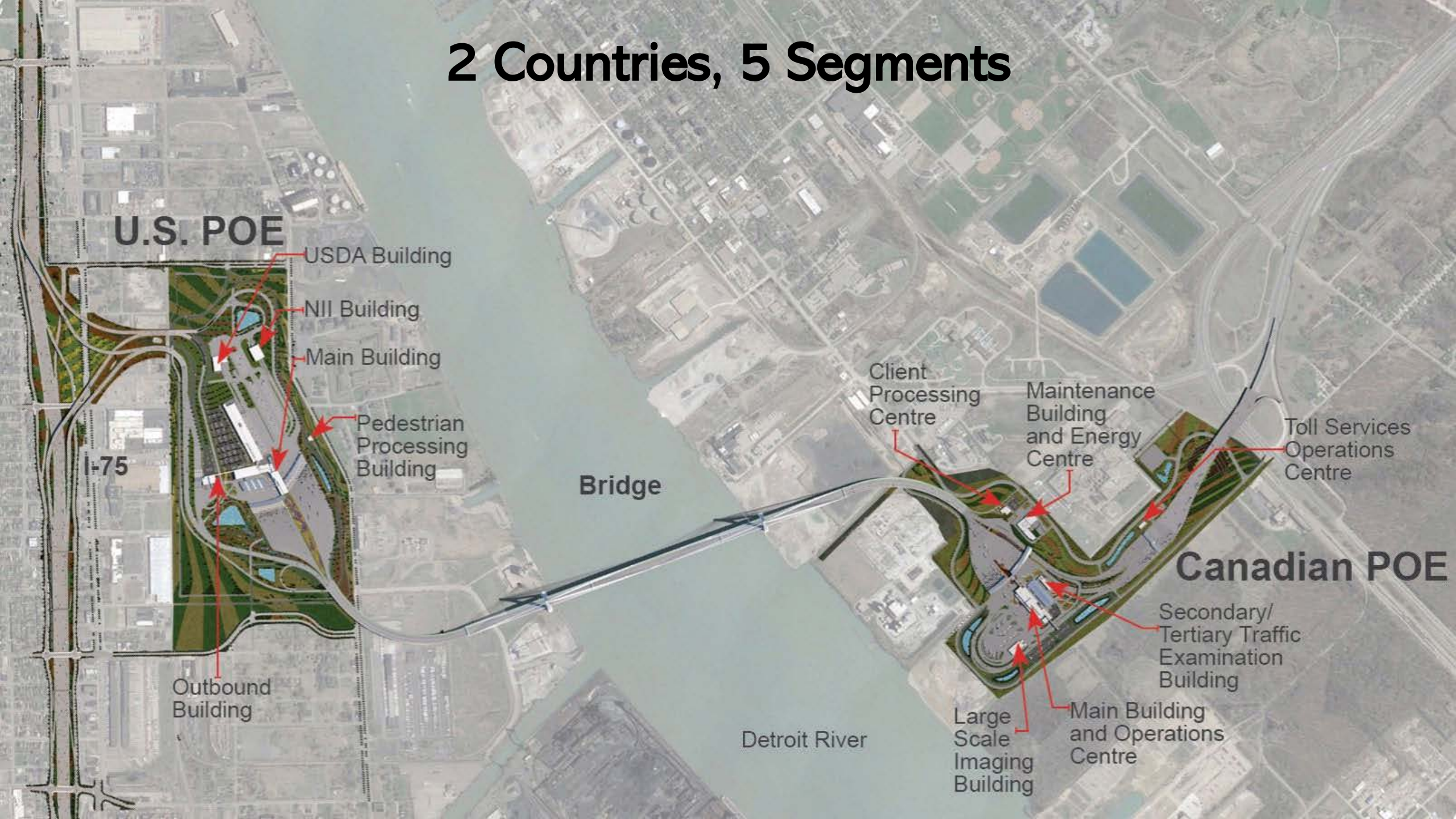


An aerial photograph of a large cable-stayed bridge with two prominent white pylons, spanning a wide river. The bridge is surrounded by extensive parking lots, roads, and some green spaces. The background shows a dense urban area.

# Welcome and Introduction



# 2 Countries, 5 Segments



**U.S. POE**

USDA Building

NII Building

Main Building

Pedestrian Processing Building

I-75

Outbound Building

**Bridge**

Detroit River

Client Processing Centre

Maintenance Building and Energy Centre

Toll Services Operations Centre

**Canadian POE**

Secondary/Tertiary Traffic Examination Building

Large Scale Imaging Building

Main Building and Operations Centre



# Health & Safety





# Project Update



## Progress on Site: Canadian Bridge



- ▶ Currently in preparation for the Lift 3 concrete pour, the rebar and template work on both the north and south pile cap is underway.
- ▶ BNA placed 608 cubic meters of concrete in the north pile cap for Lift-2 and are preparing the back span footings for rebar and form work activities.

## Progress on Site: Canadian Port of Entry



- ▶ The CAN POE has already achieved a significant milestone by installing the last wick drain on site; roughly 120,000 wicks totaling more than 2.5 million linear meters of wicks were installed over the CAN POE site.
- ▶ Surcharge operations continue across the site.
- ▶ Sandwich Street archaeological and subsurface utility engineering investigations are ongoing.
- ▶ Fencing installation continues across the north end of the POE.





# BNA Procurement





## BNA Procurement

---

Current Work Packages can be found at:

<https://www.gordiehoweinternationalbridge.com/en/procurement-opportunities>

To request a package and NDA, contact: [procurement@bnacagp.com](mailto:procurement@bnacagp.com)



# Canadian Port of Entry Buildings Subcontractor

Tier 1: Vollmer Inc.





## Vollmer Inc.

- Premier Construction & Service Provider in Ontario
- Serving the Industrial, Commercial, and Institutional markets
- Electrical, Sheet Metal, Millwright/Rigging, Data Communications, HVAC, Mechanical, Electrical Technical, High Voltage
- 24/7 365 Emergency Service
- 75,000 sq. ft. fabrication facility

# Work We Are Self-Performing for the Canadian POE

- Mechanical
- Plumbing & Piping
- HVAC
- Sheet Metal
- Electrical
- Data Communications
- Pipe & Duct Insulation

## Future Opportunities

Our major equipment buy-out will kick into high gear November 2020.

To register your vendor profile please send company info and/or product line card along with your contact information to [vollmer@vollmer.ca](mailto:vollmer@vollmer.ca)





# Canadian Port of Entry Subcontractor

Tier 1: Sterling Ridge



# Sterling Ridge Infrastructure Inc. Canadian POE scope outline

## Engineered Fill & Surcharge Project

- Sterling Ridge Infrastructure Inc. “SRI” has been awarded the Engineering Fill and Surcharge Package for the Gordie Howe International Bridge from Bridging North America.
- The main scope is to supply and install more than 850,000 metric tonnes of aggregate material.
- In addition to the aggregate material, instrumentation devices for monitoring the settlement and ground water pressure have been installed and are part of the scope of work.



# Sterling Ridge Infrastructure Inc. Canadian POE scope outline

## Concrete Works Project

- Sterling Ridge Infrastructure Inc. “SRI” has been awarded the Concrete Works Package for the Gordie Howe International Bridge from Bridging North America “BNA”, anticipated to begin in November 2020.
- The main scope consists of earthworks, fill / backfill, waterproofing / insulation, formworks / falseworks, reinforcing steel and cast in place concrete for 12 buildings, bridges, tunnels and canopies in the Canadian Point of Entry.





# Our Resources in the Windsor-Essex Region

- ▶ Operating Offices in Windsor and Leamington
- ▶ 150 pieces of owned late model heavy construction equipment
- ▶ 24 tractors
- ▶ 75 heavy equipment operators/28 heavy tractor trailer drivers
- ▶ 150+ Labourers employed at peak season
- ▶ 25 experienced Project Managers
- ▶ 5 management staff with engineering background
- ▶ 30 office administration staff
- ▶ Member of the LiUNA (Labourers), IW (Iron Workers), IUOE (Operating Engineers) and IBEW (Electricians)

**All resources required to build a quality project, on time, on budget.**

**We will self-perform all major construction activities.**



**STERLING  
RIDGE  
GROUP INC.**

# How to connect with Sterling Ridge

- ❖ Sterling Ridge Group Inc., 6260 Westar Drive,  
LaSalle ON N9J-0B5
- ❖ Telephone: 519-978-3111
- ❖ Facsimile: 519-978-1119
- ❖ <https://www.sterlingridgegroup.com>
- ❖ [info@sterlingridgegroup.com](mailto:info@sterlingridgegroup.com)
- ❖ <https://www.linkedin.com/company/sterlingridgegroupinc>



**STERLING  
RIDGE**  
GROUP INC.

*The experience and resources across our group allow us the creativity to pass along significant financial savings.*

**STRONGER TOGETHER**



**STERLING  
RIDGE**  
INFRASTRUCTURE INC.



**STERLING  
RIDGE**  
GENERAL CONTRACTING INC.



**STERLING  
RIDGE**  
ARCHITECTURAL SYSTEMS INC.



**STERLING  
RIDGE**  
LOGISTICS INC.



**STERLING  
RIDGE**  
UTILITIES INC.



**ERIE**  
SAND & GRAVEL  
LIMITED

**GLOBAL**  
ELECTRIC & LIGHTING



**STERLING  
RIDGE**  
GROUP INC.



Thank you!



We will end this main session, and you can proceed to your breakout rooms.